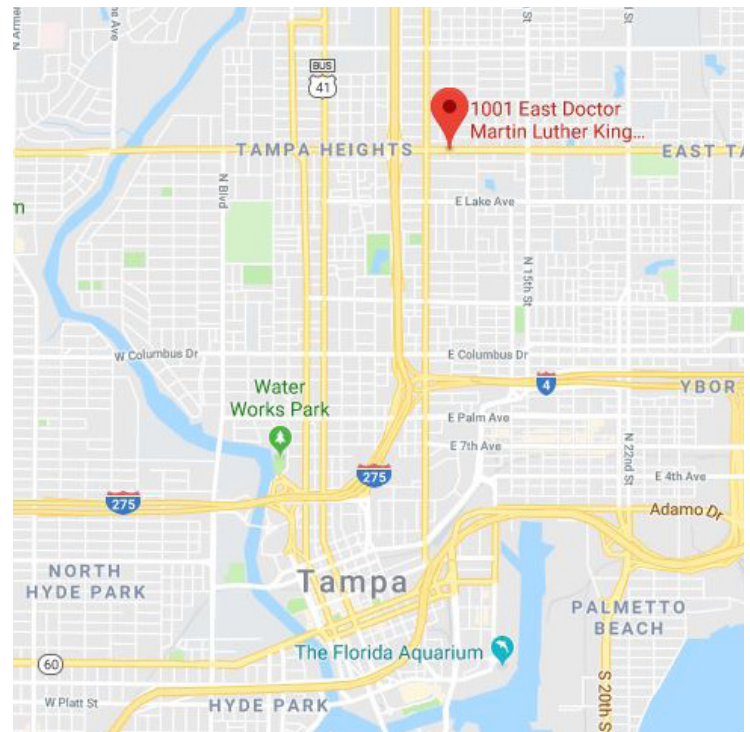




NEW, STATE-OF-THE-ART OFFICE SPACE FOR LEASE

Property Information

- Stunning, contemporary 2nd-floor offices now available for your business comprising 1,353.5 SF (923 SF, plus half of kitchen/breakroom area & common area hallway)
- Move In Ready! 3 offices, open office & reception area
- Operating Expenses: \$3.95/SF
- Minutes from Downtown Tampa, Ybor City & the Channelside District
- 1/3 mile east of I-275
- Facility Amenities:
 - Pre-wired for Internet, security alarm, security cameras, hurricane glass & sensory lights
 - Lighted pylon signage available

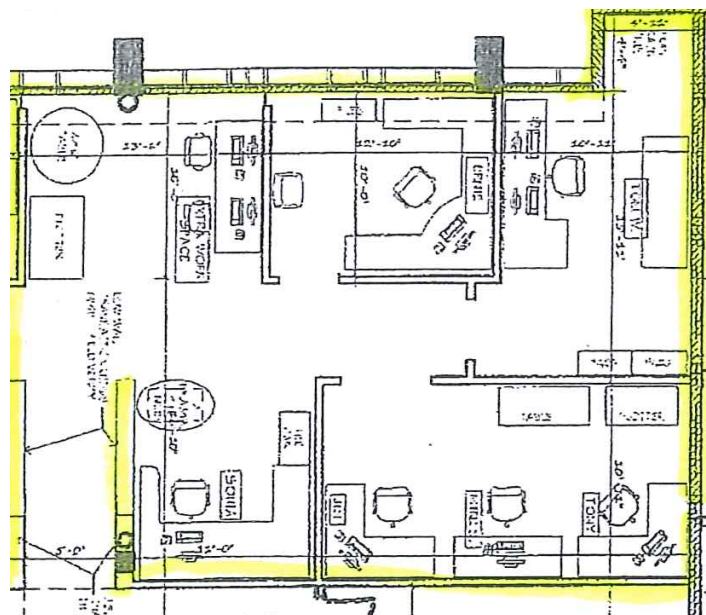


Leasing Contact:

Wanda De Boer | Managing Director - Retail Services

(Cell) 813-690-3020 | (Office) 813-269-0702 | wdeboer@rpm-realty.com

1001 E Dr. Martin Luther King Jr. Blvd., Tampa, FL 33603



Your New Office

